

BOTTOM VIEW
(THERMALLY ENHANCED VARIATIONS ONLY)

JEDEC SOLID STATE
PRODUCT OUTLINE
Copyright © 2020 JEDEC

THIS *STANDARD OUTLINE* HAS BEEN PREPARED BY THE JEDEC JC-11 COMMITTEE
AND REFLECTS A PRODUCT WITH ANTICIPATED USAGE IN THE ELECTRONICS INDUSTRY;
CHANGES ARE LIKELY TO OCCUR

TITLE PLASTIC DUAL SMALL
OUTLINE GULL WING,
1.27 MM PITCH PACKAGE

PACKAGE DESIGNATOR
PDSO-G#_I127-##...

NUMBER
MS-012

ISSUE
G.02

DATE
SEP 2020

SHEET
1 OF 5

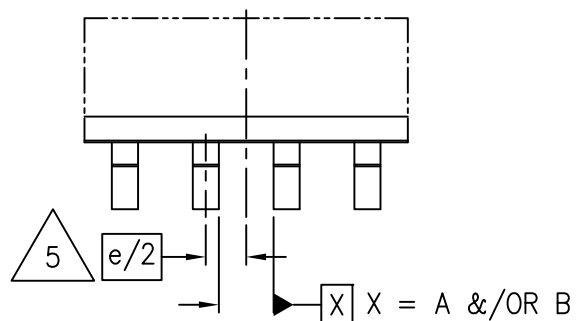
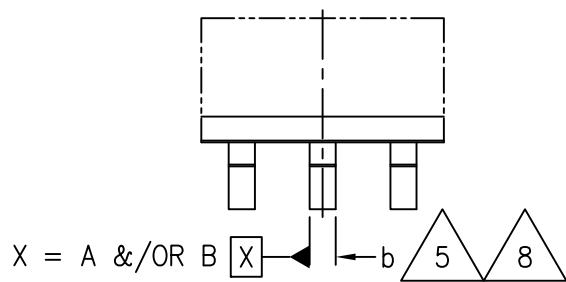
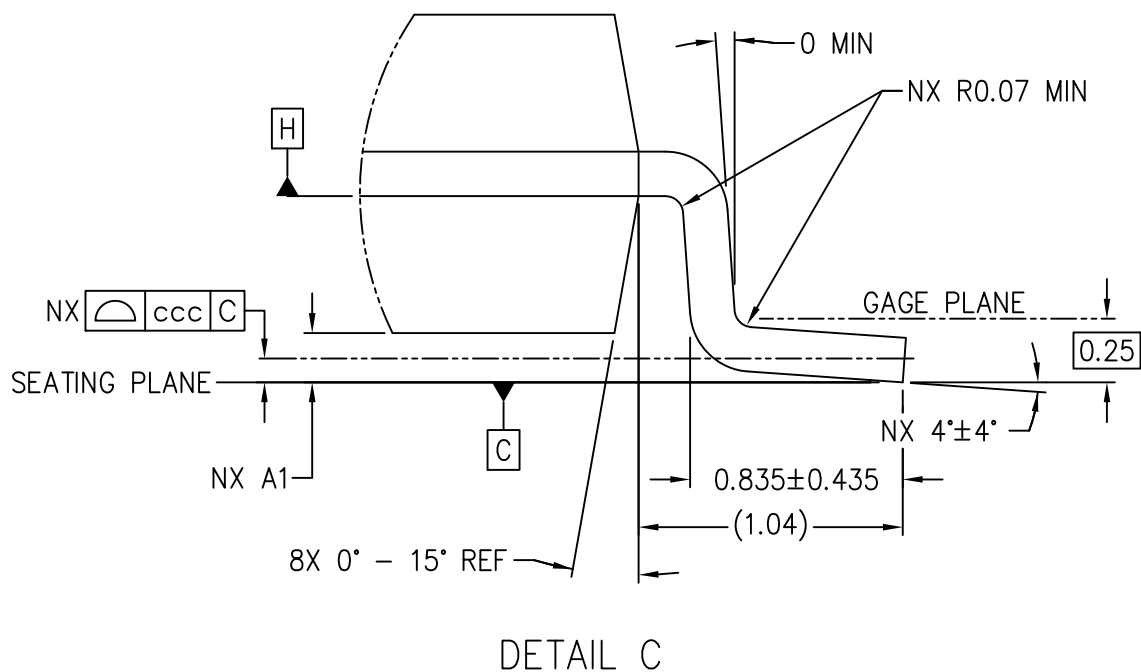
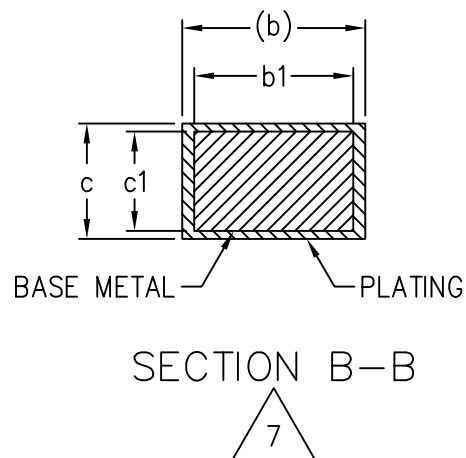
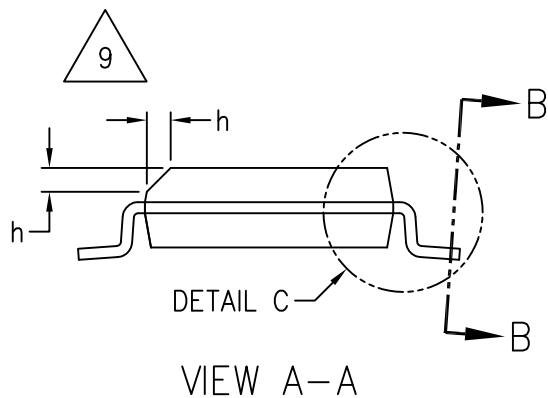


TABLE 1

COMMON DIMENSIONS				
SYMBOL	MIN	NOM	MAX	NOTES
b	0.31	---	0.51	7, 8
b1	0.28	---	0.48	7, 8
c	0.10	---	0.25	7
c1	0.10	---	0.25	7
h	0.25	---	0.50	9
NOTES	1, 2			
REF	11-719S, 11-801S			
ISSUE	F			

TABLE 3

TOLERANCE OF FORM AND POSITION	
SYMBOL	
aaa	0.10
bbb	0.20
ccc	0.10
ddd	0.25
eee	0.10
fff	0.15
NOTES	1, 2
REF	11-719S
ISSUE	E

TABLE 3

STANDARD					
SYMBOL		VARIATION			NOTES
		AA	AB	AC	
A		1.75 MAX			
A1	MIN	0.10			10
	NOM	---			
	MAX	0.25			
D BASIC		4.90	8.65	9.90	3, 4
N		8	14	16	6
NOTES		1, 2			
REF		11-719S			
ISSUE		E			

TABLE 4

THERMAL					
SYMBOL		VARIATION			NOTES
		BA	BB	BC	
A		1.70 MAX			
A1	MIN	0.00			10
	NOM	---			
	MAX	0.15			
D BASIC		4.90	8.65	9.90	3, 4
D1	MIN	1.50			11
	NOM	---			
	MAX	---			
E2	MIN	1.00			11
	NOM	---			
	MAX	---			
N		8	14	16	6
NOTES		1, 2			
REF		11-719S			
ISSUE		E			

NOTES:

1. DIMENSIONING AND TOLERANCING PER ASME Y14.5M-1994.

2. DIMENSIONS IN MILLIMETERS (ANGLES IN DEGREES)



DIMENSION D DOES NOT INCLUDE MOLD FLASH, PROTRUSIONS OR GATE BURRS. MOLD FLASH, PROTRUSIONS OR GATE BURRS SHALL NOT EXCEED 0.15 mm PER END. DIMENSION E1 DOES NOT INCLUDE INTERLEAD FLASH OR PROTRUSION. INTERLEAD FLASH OR PROTRUSION SHALL NOT EXCEED 0.25 mm PER SIDE. D AND E1 DIMENSIONS ARE DETERMINED AT DATUM H



THE PACKAGE TOP MAY BE SMALLER THAN THE PACKAGE BOTTOM. DIMENSIONS D AND E1 ARE DETERMINED AT THE OUTERMOST EXTREMES OF THE PLASTIC BODY EXCLUSIVE OF MOLD FLASH, TIE BAR BURRS, GATE BURRS AND INTERLEAD FLASH, BUT INCLUDING ANY MISMATCH BETWEEN THE TOP AND BOTTOM OF THE PLASTIC BODY.



DATUMS A & B TO BE DETERMINED AT DATUM H.

6. "N" IS THE MAXIMUM NUMBER OF TERMINAL POSITIONS FOR THE SPECIFIED PACKAGE LENGTH.



THE DIMENSIONS APPLY TO THE FLAT SECTION OF THE LEAD BETWEEN 0.10 TO 0.25 mm FROM THE LEAD TIP.



DIMENSION 'b' DOES NOT INCLUDE THE DAMBAR PROTRUSION. ALLOWABLE DAMBAR PROTRUSION SHALL BE 0.10 mm TOTAL IN EXCESS OF THE "b" DIMENSION AT MAXIMUM MATERIAL CONDITION. THE DAMBAR MAY NOT BE LOCATED ON THE LOWER RADIUS OF THE FOOT.



THIS CHAMFER FEATURE IS OPTIONAL. IF IT IS NOT PRESENT, THEN A PIN 1 IDENTIFIER MUST BE LOCATED WITHIN THE INDEX AREA INDICATED



'A1' IS DEFINED AS THE VERTICAL DISTANCE FROM THE SEATING PLANE TO THE LOWEST POINT ON THE PACKAGE BODY EXCLUDING THE LID AND OR THERMAL ENHANCEMENT ON CAVITY DOWN PACKAGE CONFIGURATIONS.



'D1' AND 'E2' MINIMUM DIMENSIONS OF THERMALLY ENHANCED TYPES ARE VARIABLES DEPENDING ON DEVICE FUNCTION (DIE PADDLE SIZE). 'D1' AND 'E2' MAXIMUM DIMENSIONS CAN BE EQUAL TO 'D' AND 'E1' MAXIMUM DIMENSIONS. END USER SHOULD VERIFY ACTUAL SIZE OF EXPOSED THERMAL PAD FOR SPECIFIC DEVICE APPLICATION.

CHANGE RECORD

IF THE CHANGE INVOLVES ANY WORDS ADDED OR DELETED (EXCLUDING DELETION OF ACCIDENTALLY REPEATED WORDS), THE CHANGE IS TO BE INCLUDED BELOW. PUNCTUATION CHANGES MAY OR MAY NOT BE INCLUDED.

INITIAL ISSUE: A	DATE: JUNE 1985	ITEM NUMBER: 11-103
------------------	-----------------	---------------------

CHANGE RECORD HISTORY:

ISSUE: B	DATE: JANUARY 1990	ITEM NUMBER: 11-223
----------	--------------------	---------------------

ISSUE: C	DATE: MAY 1990	ITEM NUMBER: 11-277
----------	----------------	---------------------

ISSUE: D	DATE: FEBRUARY 2003	ITEM NUMBER: 11-613S
----------	---------------------	----------------------

ISSUE: E	DATE: SEPTEMBER 2005	ITEM NUMBER: 11-719S
----------	----------------------	----------------------

LOCATION:	CHANGED FROM:	CHANGED TO:
PAGE 1, BOTTOM VIEW	TOP VIEW, SIDE VIEW	ADD BOTTOM VIEW TO SHOW EXPOSED THERMAL PAD ZONE
PAGE 3, VARIATION TABLES	3-NON THERMAL OPTIONS AA TO AC	ADD 3-THERMAL OPTIONS BA TO BC

ISSUE: F	DATE: AUGUST 2008	ITEM NUMBER: 11-801S
----------	-------------------	----------------------

LOCATION:	CHANGED FROM:	CHANGED TO:
PAGE 3, COMMON DIMENSIONS	c AND c1 MIN: 0.17	0.10

ISSUE: G	DATE: AUGUST 2018	ITEM NUMBER: 11-957S
----------	-------------------	----------------------

LOCATION:	CHANGED FROM:	CHANGED TO:
ALL SHEETS, TITLE	PLASTIC SMALL OUTLINE FAMILY 1.27 mm PITCH, 3.90 mm BODY WIDTH	PLASTIC DUAL SMALL OUTLINE GULL WING 1.27 MM PITCH PACKAGE
SHEET 1, PACKAGE DESIGNATOR	R-PDSO/SOP/SOIC	PDSO-G#_127-##...
SHEET 2, MOLD DRAFT ANGLE	5 TO 15 DEGREES	0 TO 15 DEGREES

CHANGE RECORD

IF THE CHANGE INVOLVES ANY WORDS ADDED OR DELETED (EXCLUDING DELETION OF ACCIDENTALLY REPEATED WORDS), THE CHANGE IS TO BE INCLUDED BELOW. PUNCTUATION CHANGES MAY OR MAY NOT BE INCLUDED.

ISSUE: G.01	DATE: APRIL 2019	ITEM NUMBER: 11-972E
-------------	------------------	----------------------

LOCATION:	CHANGED FROM:	CHANGED TO:
SHEET 2, DETAIL C	NX R0.70 MIN	NX R0.07 MIN

ISSUE: G.02	DATE: SEPTEMBER 2020	ITEM NUMBER: 11-972E
-------------	----------------------	----------------------

LOCATION:	CHANGED FROM:	CHANGED TO:
SHEET 1	1.44 MAX	A
SHEET 4, TABLE 4 & 5		ADDED SYMBOL A
SHEET 4, TABLE 5		ADDED NOTE 11 TO SYMBOLS D1 AND E2